



HIGH POWER DUAL FREQUENCY PROFESSIONAL FISH FINDING SYSTEM

Model V-8100

MAJOR FEATURES:

Three-unit configuration, consisting of a control unit, a transceiver & power supply unit (black box), and an optional 15" TFT LCD monitor or a user-purchased display unit, providing flexibility in choosing the installation site

Just plugging in a PC monitor to the black box completes a sophisticated high power dual-frequency professional fish finding system. Housed in a marine sturdy cabinet, the optional daylight-viewing LCD monitor can be oriented horizontally or vertically for a prolonged echogram presentation or a high-resolution display.

A total of 7 user-customizable depth ranges are selectable, enabling the user to set the desired maximum range limit for each range.

Two transducers are selectable from a wide range of frequencies (from 20 to 200 kHz in 13 steps). Specify the desired frequency pair when ordering.

The transmit power level ranges from 300W to 5 kW RMS depending on the transducers in use, each with 4-step power reduction.

The display modes include a full-screen single-frequency mode, a dual-frequency split-screen mode and a screen memory recall mode. A nav. data page is also available with GPS data supplied externally.

Double, triple or quadruple image feed rate is selectable for fast review of echo history in addition to a total of 9 regular rates, some with a display of time-compressed image of earlier soundings for extended echo history display.

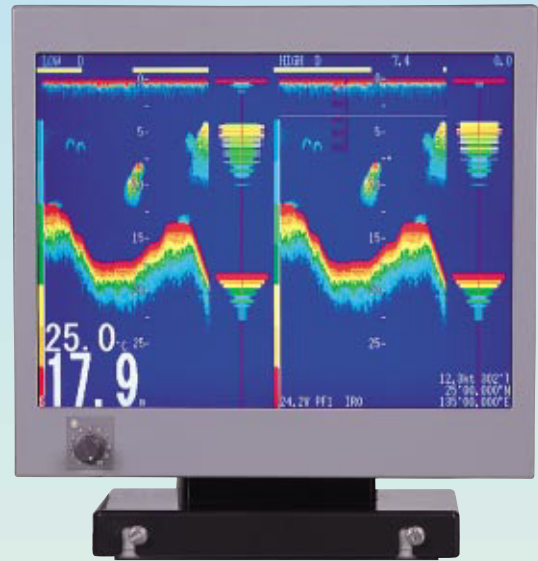
A total of 4 TVG (time-varied gain) curves are selectable to equalize responses from different depths, with 4 levels of gain compensation for deep range sounding.

Three different sets of most-often used operating parameters can be stored into, and instantly recalled from, non-volatile memory.

Three types of interference-fighting functions - noise reduction, interference rejection and jamming rejection - can be activated to ensure an undisturbed observation of echoes in crowded or noisy operating environments.



Transceiver/Power Supply



15" Monitor, option



Control

Specifications

●**Frequencies:** two frequencies selectable from 20, 24, 28, 38, 40, 45, 50, 60, 68, 75, 80, 150, 200 kHz ●**Transmit Power:** 300W to 5 kW RMS (2.4 to 40 kW p/p) depending on transducer connected ●**Power Reduction Levels:** 12.5%, 25%, 50%, 100% ●**Ranges:** 25, 50, 100, 150, 200, 300, 500 m/fthm/br (default settings), or 7 customizable ranges to 3000 m/fthm/br ●**Display Modes:** full-screen single frequency mode, split-screen dual frequency mode, screen memory recall mode, and nav. data mode (with NMEA-0183 data externally supplied) ●**Expansion Modes:** bottom-locked and pelagic ●**Echo Dynamic Ranges:** -6 to + 6 dB in 1 dB steps ●**TVG Curves:** 10LogR, 20LogR, 30LogR, 40LogR ●**Gain Compensation Levels:** 10 to 40 dB in 4 steps ●**Feed Rates:** regular in 4 steps, high rates, or regular with time-compressed image ●**Noise Reduction Levels:** 9 ●**Interference Rejection Levels:** 3 ●**Jamming Rejection Levels:** 9 ●**Alarms:** depth, echo strength, water temperature limits & variation range, fish ●**External Interfaces:** NMEA-0183 (data), analog (echo & trigger), VGA (video) ●**Dimensions (WXHXD, mm):** 340X117X112 (control), 248X281X407 (black box), 308X379X208/vertical or 340X363X211/horizontal (optional LCD monitor) ●**Weight:** approx. 2 kg (control), 11 kg (black box), 10 kg (optional monitor) ●**Power Requirements:** 20 to 40 VDC, approx. 50W ●**Ambient Temperature:** 0 to 50°C/operating, less than 90% RH, -10 to 60°C/storage

NOTE: Specifications are subject to change without notice or obligation.



36-2-1001 Udagawa-cho, Shibuya-ku, Tokyo, 150-0042 Japan
Phone: (03)3461-3606 / Telefax: (03)3496-2078 E-mail: sales@japan-marina.co.jp
Web site: www.japan-marina.co.jp